



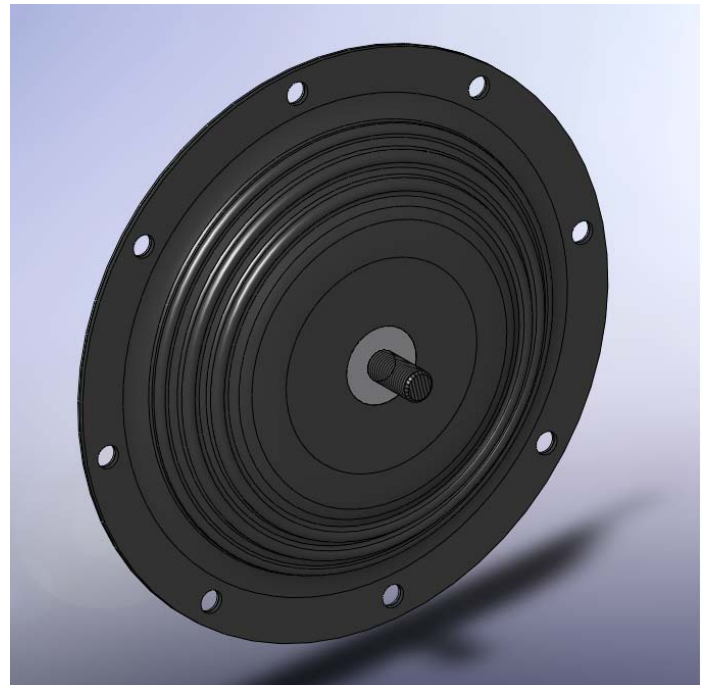
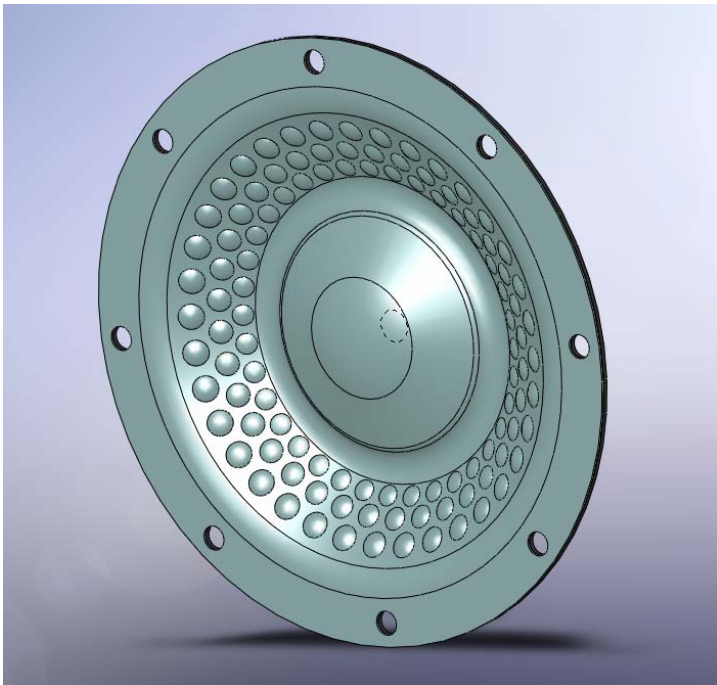
PRODUCT BULLETIN

ONE-PIECE PTFE *EXTREME* DIAPHRAGMS

Blagdon Pump are committed to the continuous improvement of our product and service and with this in mind we are sourcing new One-Piece PTFE *extreme* diaphragms.

The diaphragm is a complete new development and will apply to all models from the B15 upwards. It is a true "One-Piece" design, having an integral Frontplate and Backplate, requiring no additional parts to assemble to the shaft. This advanced manufacturing technology eliminates the traditional joint between Frontplate, Diaphragm, Backplate and Shaft, thereby removing a potential leak path which so often destroy's the pump centre in the event this joint loosens, if pumping a corrosive liquid.

New Integral Plate PTFE Diaphragm :- SA10575 for all Blagdon 1" Bolted Diaphragms.



The first model released is the 1" B25 Bolted metallic range. This Diaphragm will replace the existing One-Piece Diaphragm - 1A348, which although classed as a one-piece, still used a separate Frontplate and Backplate.

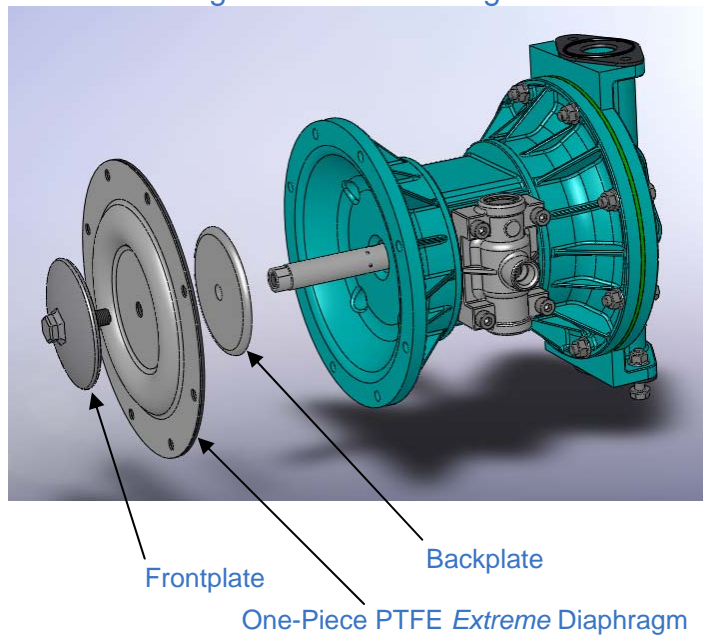
If preferred, this diaphragm can also replace the existing two-piece (1A071 + 1A089).

As with all other Blagdon Pumps, the diaphragm shaft, 25-160 remains the same. Because of the reduced number of components, stripdown and re-build time is reduced. The first diaphragm simply screws onto the shaft, hand tight. This is placed through the pump centre, and the second diaphragm is fastened in place, again hand tightening. If the diaphragm has bolt holes, simply keep hand tightening until the first holes line up. This reduces downtime by approximately two minutes per pump, and will greatly improve the lifetime of pump centre's and airside components, if handling corrosive fluids.

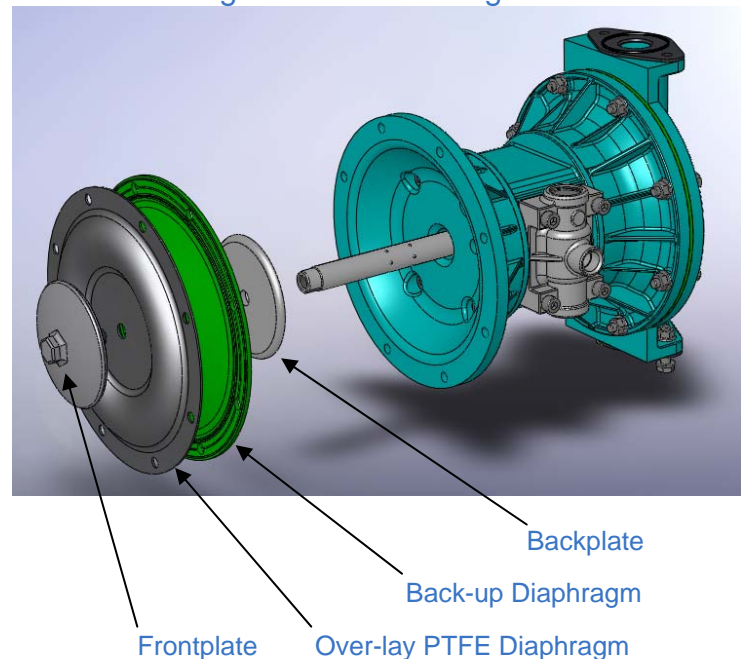
Refer to page 2 for more details of the parts replaced.

Product Bulletin - Cont'd :-

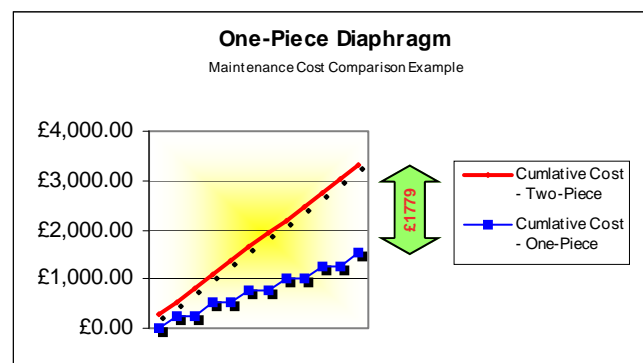
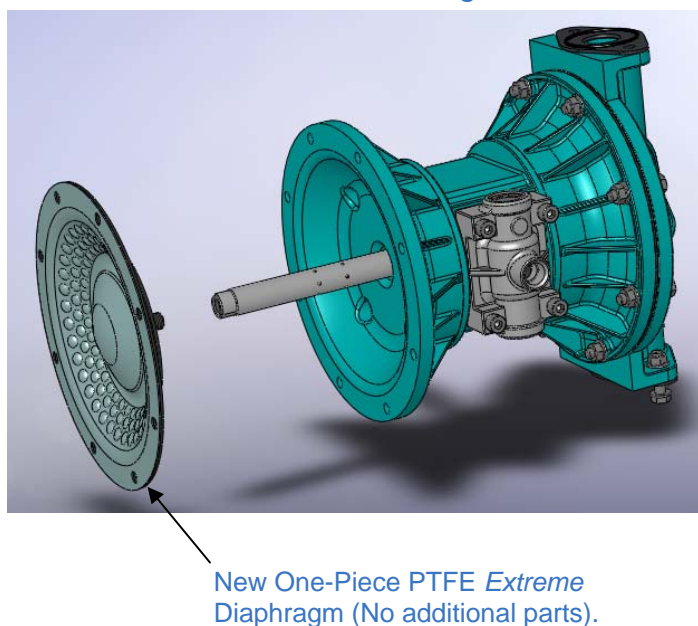
Existing One-Piece Arrangement



Existing Two-Piece Arrangement



New One-Piece Arrangement



BENEFITS :-

The new diaphragms provide a much greater level of protection for the pump centre. The traditional Frontplate / Backplate joint can loosen occasionally under certain conditions, allowing fluid to pass through the stud connection into the airside of the pump. This is completely eliminated with the new design, with no possible leak path through to damage the pump centre.

EXAMPLE

This example is a typical savings opportunity for the new diaphragms, which will last at least twice as long. It assumes 28mins for the one-piece, to strip and re-build @ £45/hr and a £500/hr loss in production during maintenance, against 30mins for the two-piece, plus the cost of two Airside Kits. Over the typical 12 x occurrence maintenance cycle of the old arrangement, the saving would be **£1779.00**